

GICA Shipper's Panel

11 August 2016

Larry Lavoie



Who are we?



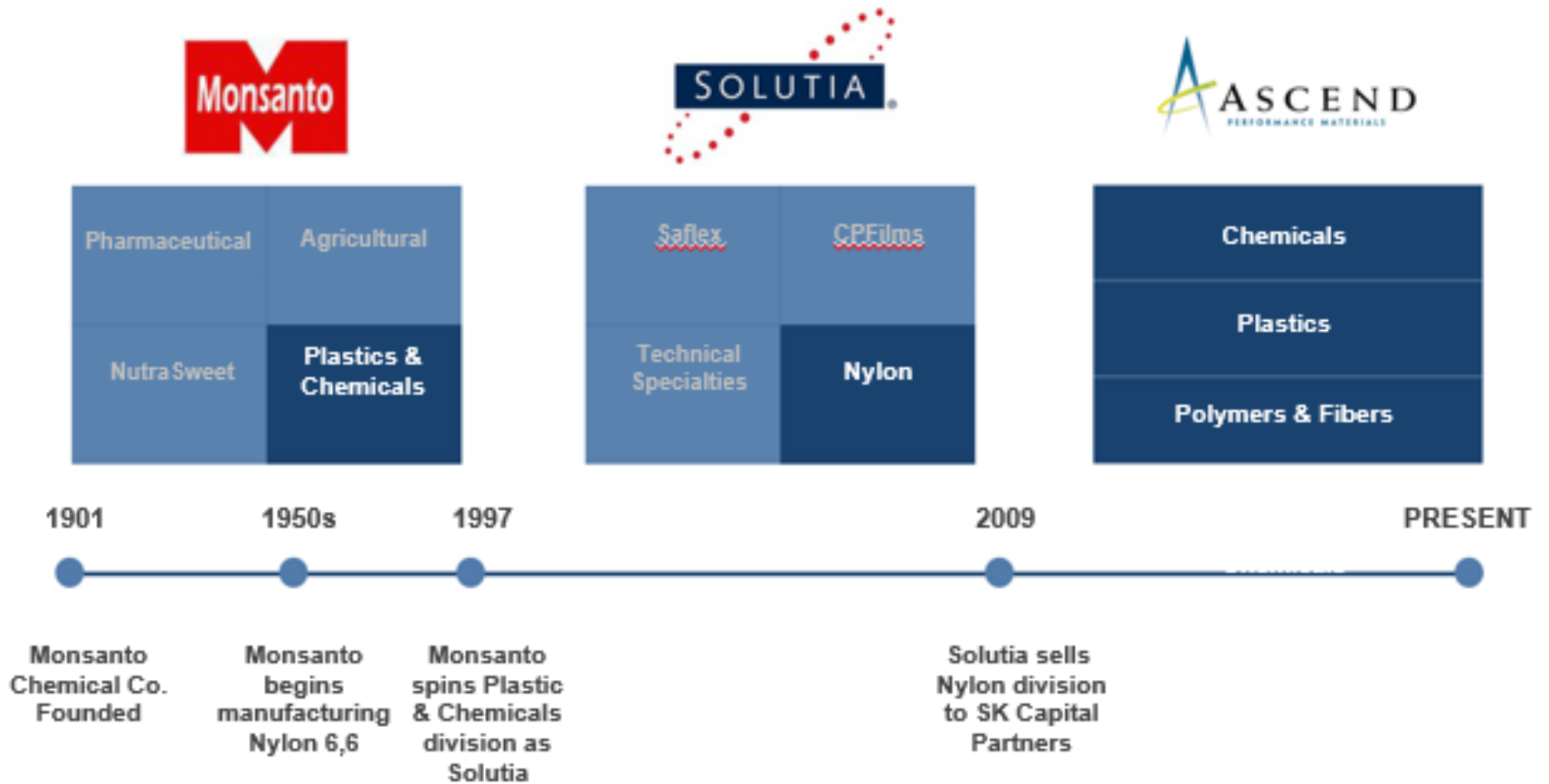
Ascend Performance Materials is a global leader in the production of Nylon 6,6, committed to excellence in supplying the world market. Ascend is the largest nylon 6,6 polymer producer in the world.

Ascend has five manufacturing plants:

- **Chocolate Bayou, TX**
- **Pensacola, FL**
- **Decatur, AL**
- **Greenwood, SC**
- **Foley, AL**



More Than 50 Years Experience in Nylon 6,6 Production



Global Sales & Distribution Network



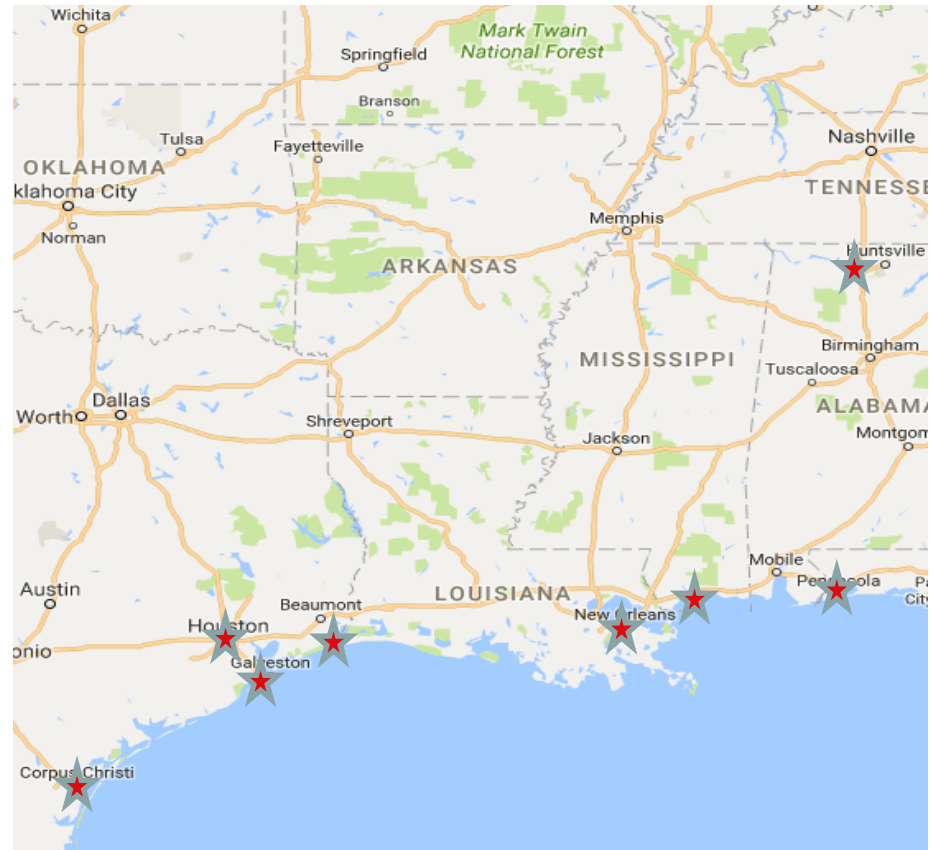
Global reach from our strong manufacturing base

Plant/Terminal Locations

Ascend moves approximately 1.1 million tons of product along the GIWW each year.

Primary Routes:

- Chocolate Bayou, TX to Decatur, AL
- Chocolate Bayou, TX to Houston, TX
- Corpus Christi, TX to Pensacola, FL
- Port Arthur, TX to Pensacola, FL
- New Orleans, LA to Pensacola, FL
- Pascagoula, MS to Pensacola, FL
- Decatur, FL to Pensacola, FL



Operational Issues on the GIWW



Weather

Effect on Business

Lock Congestion

**Lock Closures
(planned & unplanned)**

Mechanical Breakdown

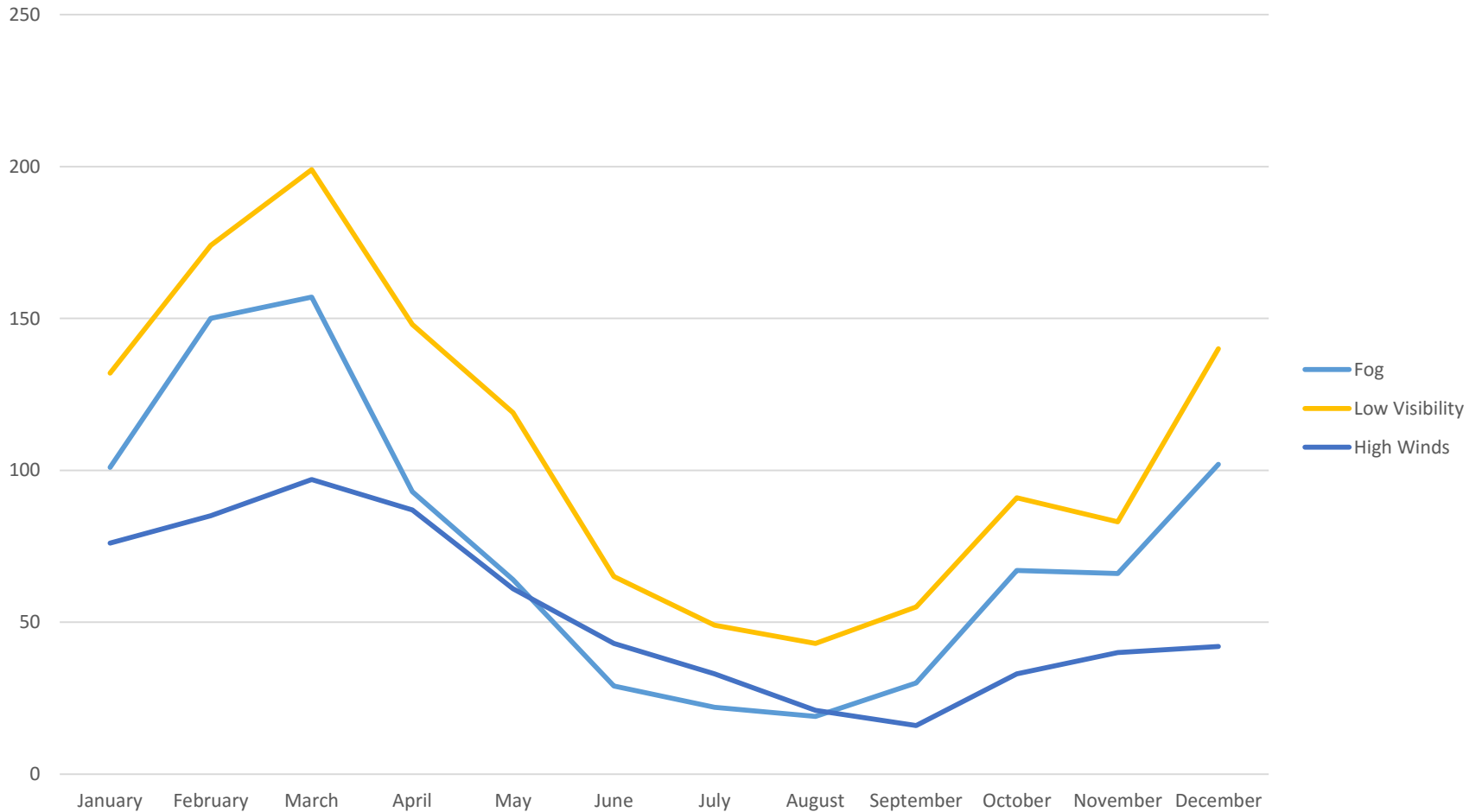
Waterway Closures

- Lost production
- Customer orders missed
- Disruption of raw material pipeline
- Key plant assets & personnel being idled or shutdown
- Extensive expense in adding equipment or buying materials on the spot market
- Costly unplanned overhauls

Weather Planning Chart



2014 - 2016 Historical Weather Data Along the Gulf Coast



Improving transit for shippers



- Keep the alternate route open and maintain it after the IHNC lock re-opens.
 - Without this route, a long term outage at the IHNC lock could cause extreme implications to manufactures, utility companies and the economy.